



REDU



REDU Consortium

- Lapland Education Center REDU
- REDU Edu Oy (Ltd)
- Santasport Lapland Sports Institute
- Santasport Finland Oy
- Lapland Summer University





Our region – Finnish Lapland

6 municipalities



Lapland – Above Ordinary



21

Municipalities



180000

Inhabitants



200000

Reindeers



Economics

Tourism, Services,
Reindeer husbandry,
Mining, Industry



52 days

Polar light



72 days

Midnight sun



sept - march
9 PM – 1 AM

Northern lights



0,5

milj. letters
annually

190

countries

Santa Claus

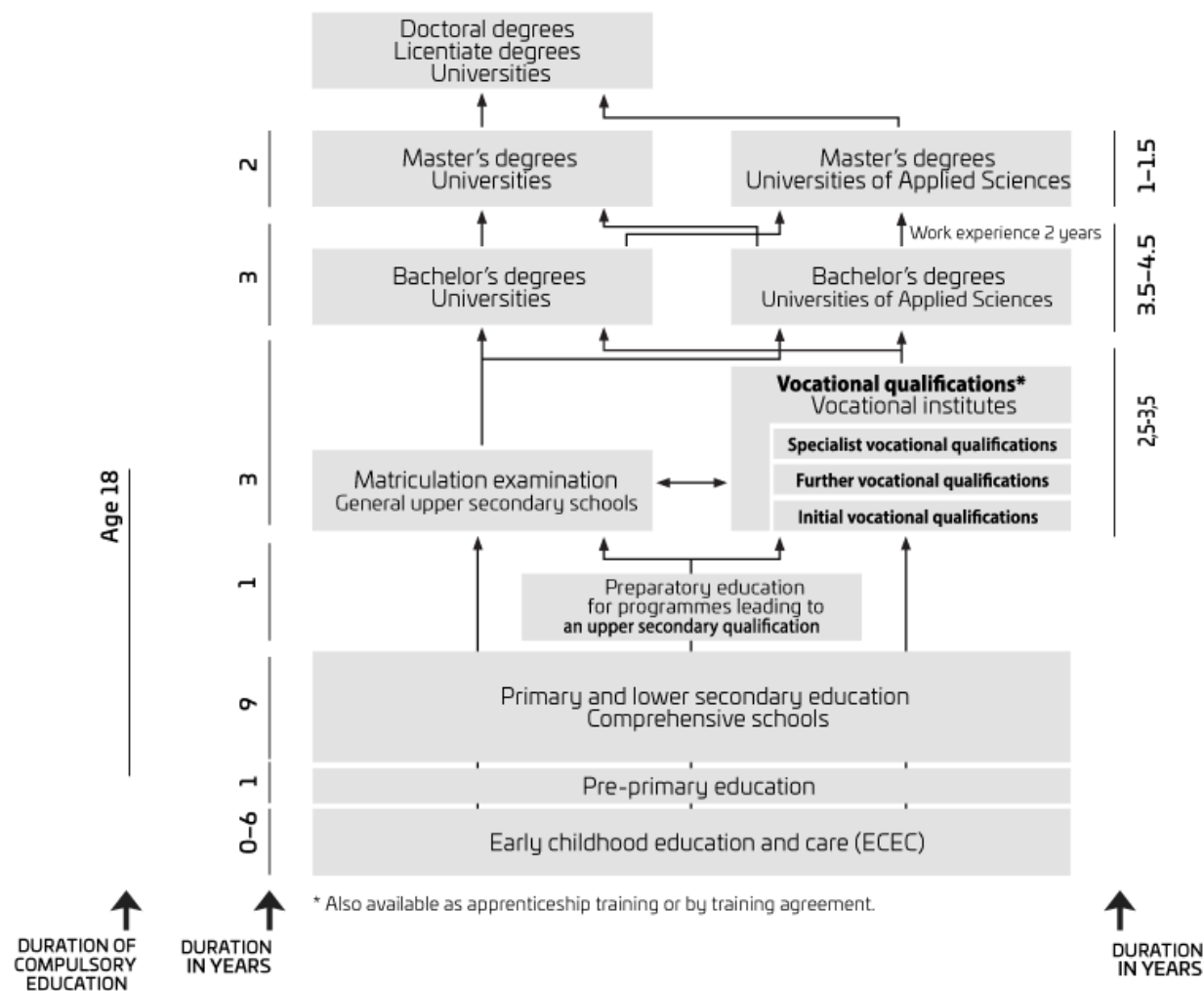


Lapland is the Wild
North of Finland

100367 m²

one third of size of Finland

The Finnish Education system

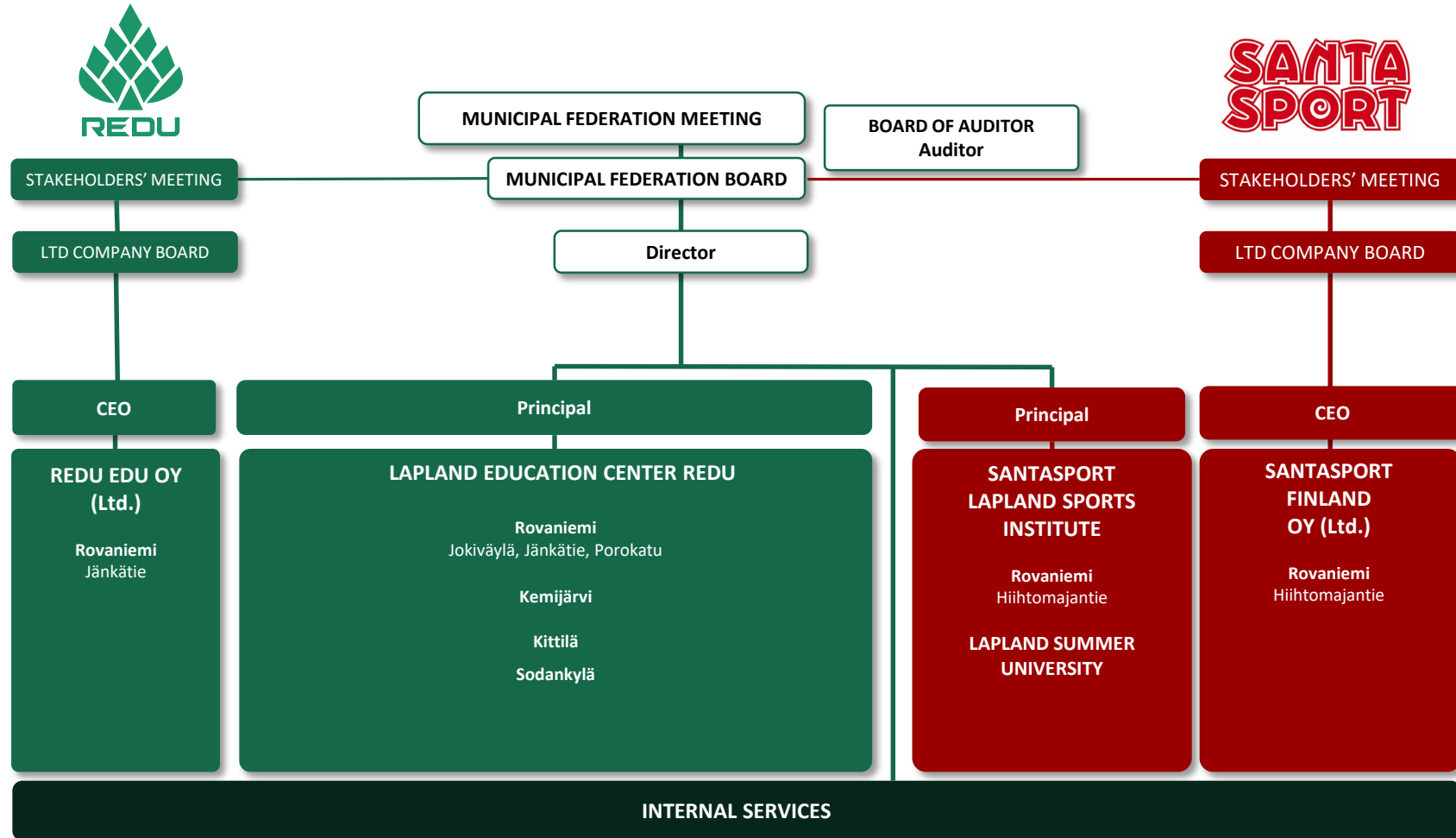




REDU is the largest vocational education provider in Lapland



REDU Municipal Federation of Education – REDU Consortium



REDU in numbers



1144

Qualifications per year



5773

Students in vocational qualifications



1800

Other students
(incl. REDU Edu Ltd.)



4,30

Student satisfaction (1-5)



569

Employees (2022)



7

Units



4,3M€

Project and development
funding (2022)

Success in national Skills
Competition 2023



2 gold medals &
2 bronze medal

Fields of Education

Lapland Education Centre REDU

- Information and communications technology
- Engineering, manufacturing and construction
- Business and Administration
- Forestry
- Natural sciences, mathematics and statistics
- Health and welfare
- Services
- Arts and humanities

Preparatory training

- Preparatory Education for Vocational Training
- Training for Work and Independent Living



Fields of Education

Santasport, Lapland Sports Institute

- Arts and humanities
- Health and welfare
- Services

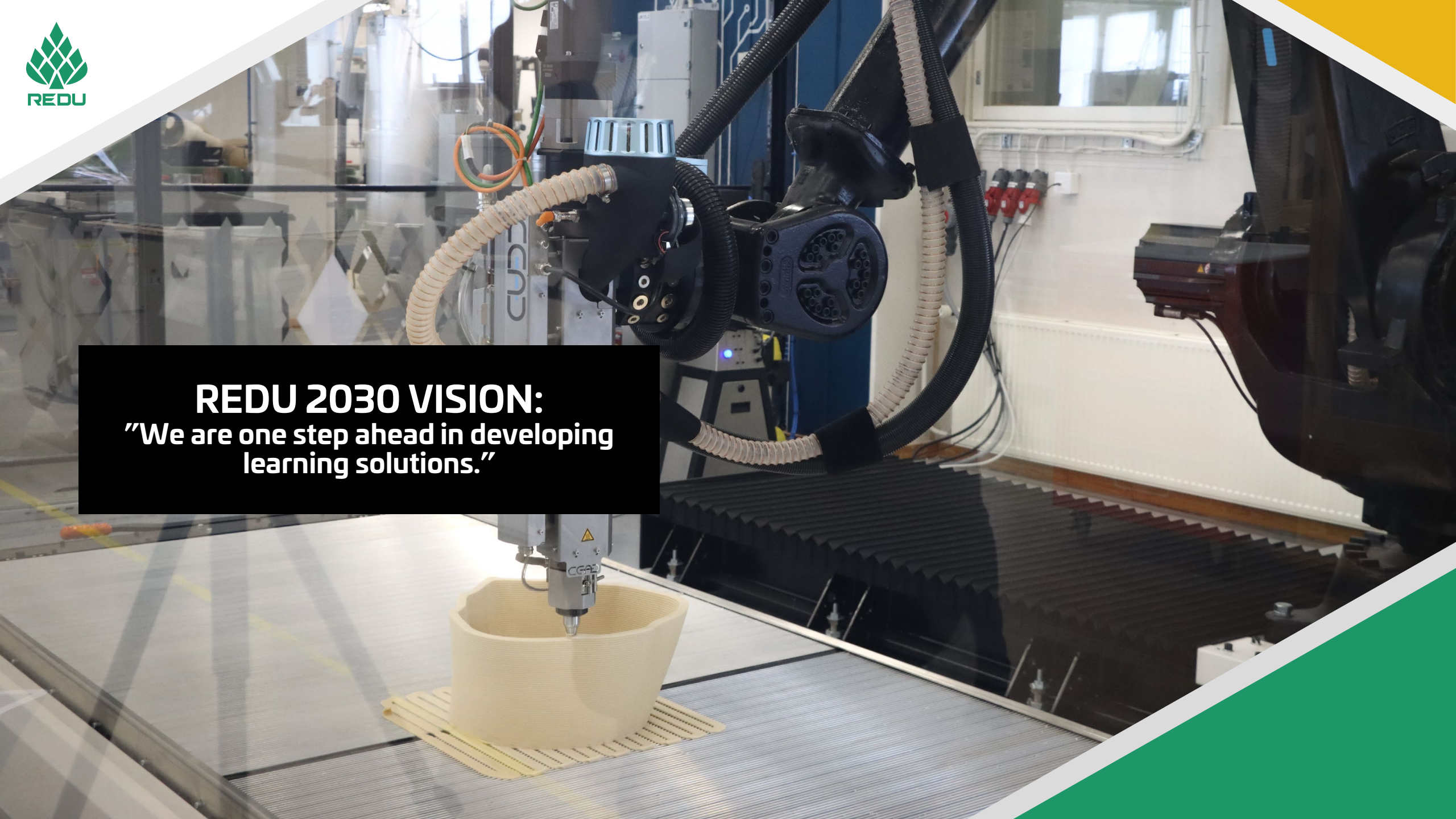


“Santasport is an Olympic Training Center-certified training center that provides an excellent training environment for numerous sports.”





REDU 2030 VISION:
"We are one step ahead in developing
learning solutions."





We provide skills for
working life and life
long learning.





The best talents are
made together with
working life.



Aims of international Relations in REDU

- Develop mutual cooperation
- Personalised learning paths within global environment
- Benchmark best practices for the future development
- Create innovations for learning and teaching practices



Aims of international Relations in REDU

- Collaborate on international digital and virtual learning environments
- Encourage international mobility - both students and staff
- Help Lappish companies to internationalize
- Sustainable growth in values & global citizenship



Network and Cooperation

Networks established with the support of The Finnish National Board of Education (Finvet.fi)

- **FinnVET in China**
China Network
- **HANAKO**
Finland-Japan Network
- **Thai 'Go**
Thailand-Finland Network

- **Member of Xarxa FP (Xara FP)**

European non-profit association created in 1999 gathering 35 cities from 15 EU countries working together on VET mobility and innovation. Together they represent more than 600 VET Schools including more than 250 000 VET students. Xarxa FP organize work placements for VET students and trainings for VET teachers in European city members of the network

- Work placements for VET students and training places for VET teachers within Europe
- REDU is also involved in several projects (Erasmus+, Nordplus) that includes collaboration with partners around EU
- Member of national and sub-sectoral networks (f.e. Social and Health Care).

Thank
you!

